



# GAT MONTHLY MEMBERSHIP PROGRESS REPORT

Results as of: 5/31/2026

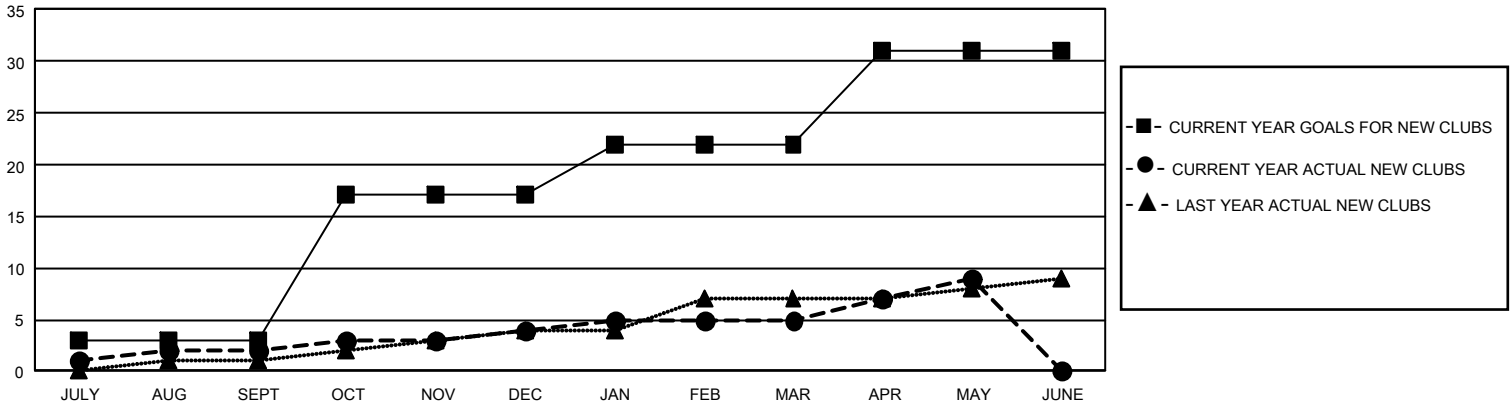
## GMT Constitutional Area 1, Group E

REPORT DOES NOT INCLUDE CLUBS IN UNDISTRICTED AREAS.

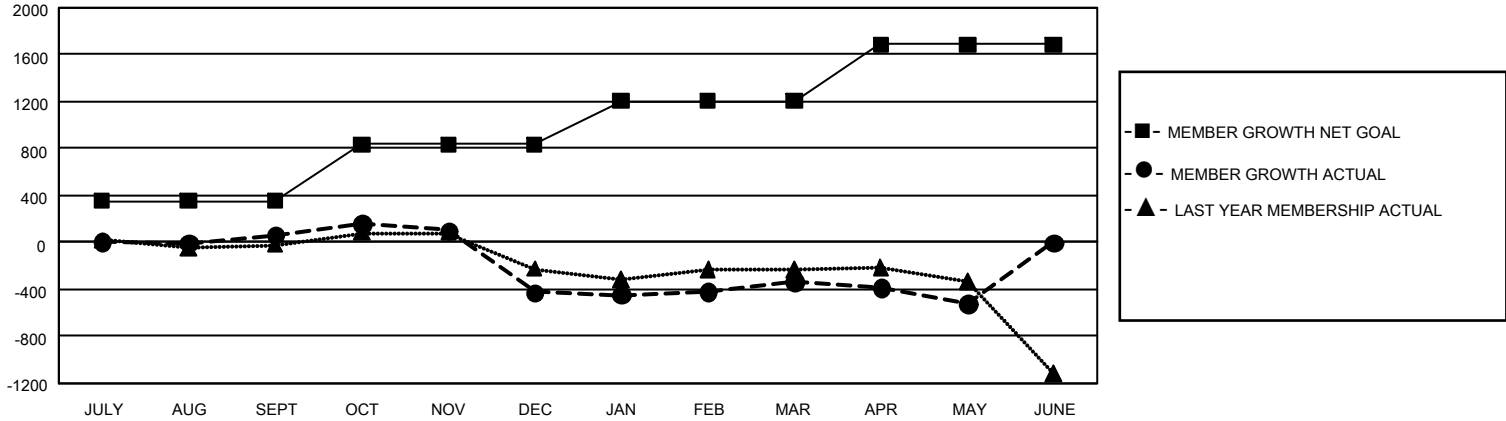
Clubs			
RESULTS FOR 2025-2026			
QUARTER	NEW CLUB GOAL	NEW CLUBS	DROPPED CLUBS
JULY/AUG/SEPT	9	2	8
OCT/NOV/DEC	42	2	14
JAN/FEB/MAR	15	1	0
APR/MAY/JUNE	27	4	6

Members			
RESULTS FOR 2025-2026			
QUARTER	MEMBER GROWTH NET GOAL	MEMBER GROWTH ACTUAL	DROPPED MEMBERS ACTUAL (including transfers)
JULY/AUG/SEPT	354	913	759
OCT/NOV/DEC	481	800	1,205
JAN/FEB/MAR	372	849	671
APR/MAY/JUNE	479	610	724

GOALS AND ACTUAL NEW CLUBS CUMULATIVE



GOALS AND ACTUAL MEMBERS CUMULATIVE



<b>DROPPED CLUBS: 28</b>  <b>DROPPED MEMBERS</b> DECEASED 484 CLUB CANCELLED 138 OTHER 2,725 <b>TOTAL 3,347</b>	702 CLUBS OF 1,262 ADDED 1 OR MORE NEW MEMBERS	<b>GENDER DISTRIBUTION</b> MALE 21,538 (65.67%) FEMALE 11,216 (34.20%) NON BINARY 0 (0.00%) PREFER NOT TO ANSWER 42 (0.13%)
	<a href="#">CLICK HERE FOR CUMULATIVE MEMBERSHIP DATA</a>	TOTAL FAMILY UNIT MEMBERS 6,424 FAMILY MEMBERS PAYING HALF DUES 3,294